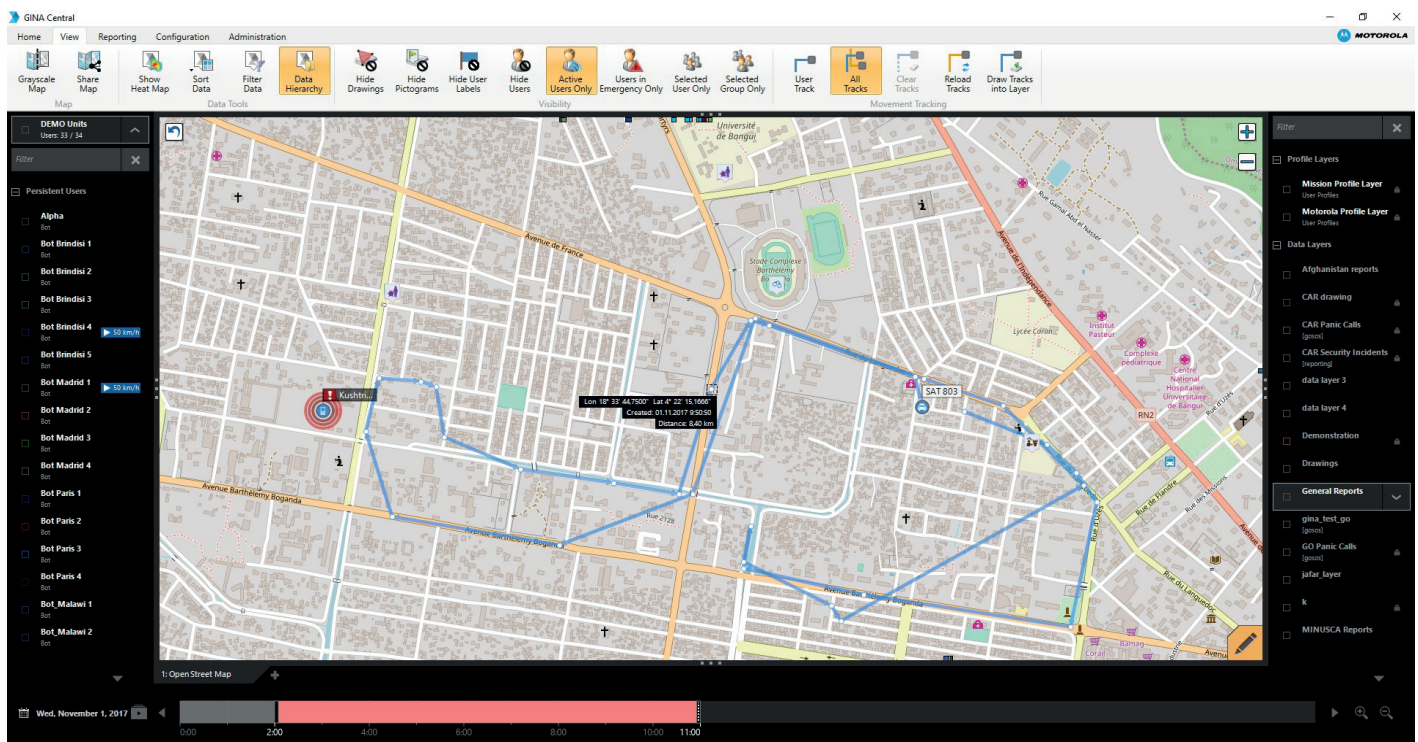


# VEHICLE AND PERSONNEL TRACKING SOLUTION

# GINA CENTRAL MONITORING AND SECURITY MANAGEMENT PLATFORM

The tracking solution powered by GINA represents a monitoring and security management platform which combines vehicle and staff tracking using **TETRA** and **MotoTRBO radios**, variety of **tracking devices** and **smart applications**.

Positions of selected personnel are shown in one unite platform together with optional security, logistics and project management data.



GINA Central monitoring and security management platform enables a real-time view and communication over **shared common operation picture**.

## KEY FEATURES

- » Real-time monitoring of staff, vehicles and assets
- » Live sharing of data sets
- » Advanced geo-fencing and security management features
- » Automatic notifications and alerts over SMS, e-mail, SDS radio message
- » Access to historical data using an interactive timeline
- » Task management and user navigation
- » Online and offline working mode



## MOTOROLA SOLUTIONS RADIOS

- » Expanding the use of TETRA and MotoTRBO radios by sending GPS position in a selected interval
- » Sending individual or group messages to the radio users using SDS message
- » Emergency button to send SOS to your command and control room followed by a set of notification



## GSM TRACKER

- » Near real-time affordable tracking to monitor your staff and fleet
- » Operates on all GSM frequencies (850, 900, 1800, 1900MHz) allowing the use in multiple countries and regions
- » Emergency button to send SOS to your command and control room followed by a set of notification



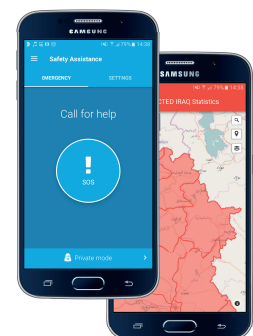
## SATELLITE TRACKER

- » Operates on Iridium network, ensuring a global coverage. The reporting rate starts from 1 minute interval and can be changed remotely
- » Sending individual or group messages to satellite trackers users using SBD message
- » Emergency button to send SOS to your command and control room followed by a set of notification



## GINA GO SMART APPLICATION

- » Accurate near-real time tracking of your staff with reporting rate starting from 5 seconds
- » Tracking can be easily turned off to ensure the personal privacy of your staff
- » Possibility to send a check-in message in predefine time intervals
- » Emergency button to send SOS with an automatic audio message to your command and control room followed by a set of notification
- » Support of Android and iOS mobile phones



## SYSTEM SECURITY

- » HTTPS communication protocol
- » ISO 27010 certified server
- » Encrypted communication protocol and database
- » Floating session key
- » Proprietary encryption algorithm
- » Possibility to install the server on client premises