

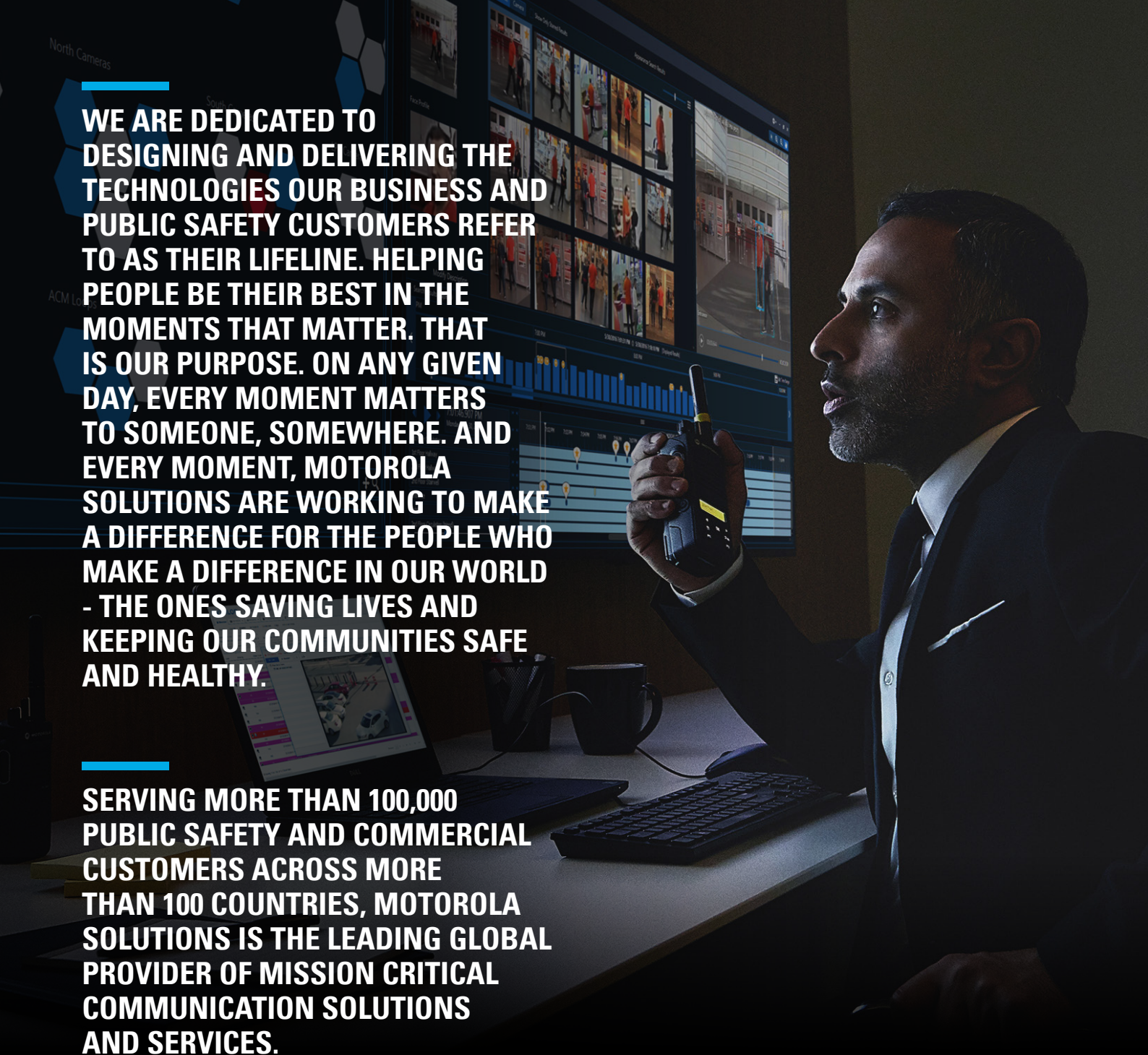


# KNOW WHAT MATTERS WHEN IT MATTERS

**CRITICAL COMMUNICATIONS WORLD 2021**







**WE ARE DEDICATED TO DESIGNING AND DELIVERING THE TECHNOLOGIES OUR BUSINESS AND PUBLIC SAFETY CUSTOMERS REFER TO AS THEIR LIFELINE. HELPING PEOPLE BE THEIR BEST IN THE MOMENTS THAT MATTER. THAT IS OUR PURPOSE. ON ANY GIVEN DAY, EVERY MOMENT MATTERS TO SOMEONE, SOMEWHERE. AND EVERY MOMENT, MOTOROLA SOLUTIONS ARE WORKING TO MAKE A DIFFERENCE FOR THE PEOPLE WHO MAKE A DIFFERENCE IN OUR WORLD - THE ONES SAVING LIVES AND KEEPING OUR COMMUNITIES SAFE AND HEALTHY.**

**SERVING MORE THAN 100,000 PUBLIC SAFETY AND COMMERCIAL CUSTOMERS ACROSS MORE THAN 100 COUNTRIES, MOTOROLA SOLUTIONS IS THE LEADING GLOBAL PROVIDER OF MISSION CRITICAL COMMUNICATION SOLUTIONS AND SERVICES.**



**MISSION-CRITICAL  
COMMUNICATIONS**



**COMMAND CENTRE  
SOFTWARE**



**VIDEO SECURITY  
& ACCESS CONTROL**



**MANAGED  
& SUPPORT SERVICES**



**MOTOROLA SOLUTIONS HAS CREATED THE  
FIRST AND ONLY MISSION-CRITICAL ECOSYSTEM BUILT  
SPECIFICALLY FOR PUBLIC SAFETY AND ENTERPRISE.  
IT IS A CONNECTED TECHNOLOGY ECOSYSTEM THAT  
UNIFIES VOICE, VIDEO SECURITY AND ACCESS CONTROL  
ON A COMMON OPERATING PLATFORM.**



**MISSION-CRITICAL  
COMMUNICATIONS**

**CUSTOMERS  
—  
CITIZENS**

**VIDEO  
SECURITY &  
ACCESS CONTROL**

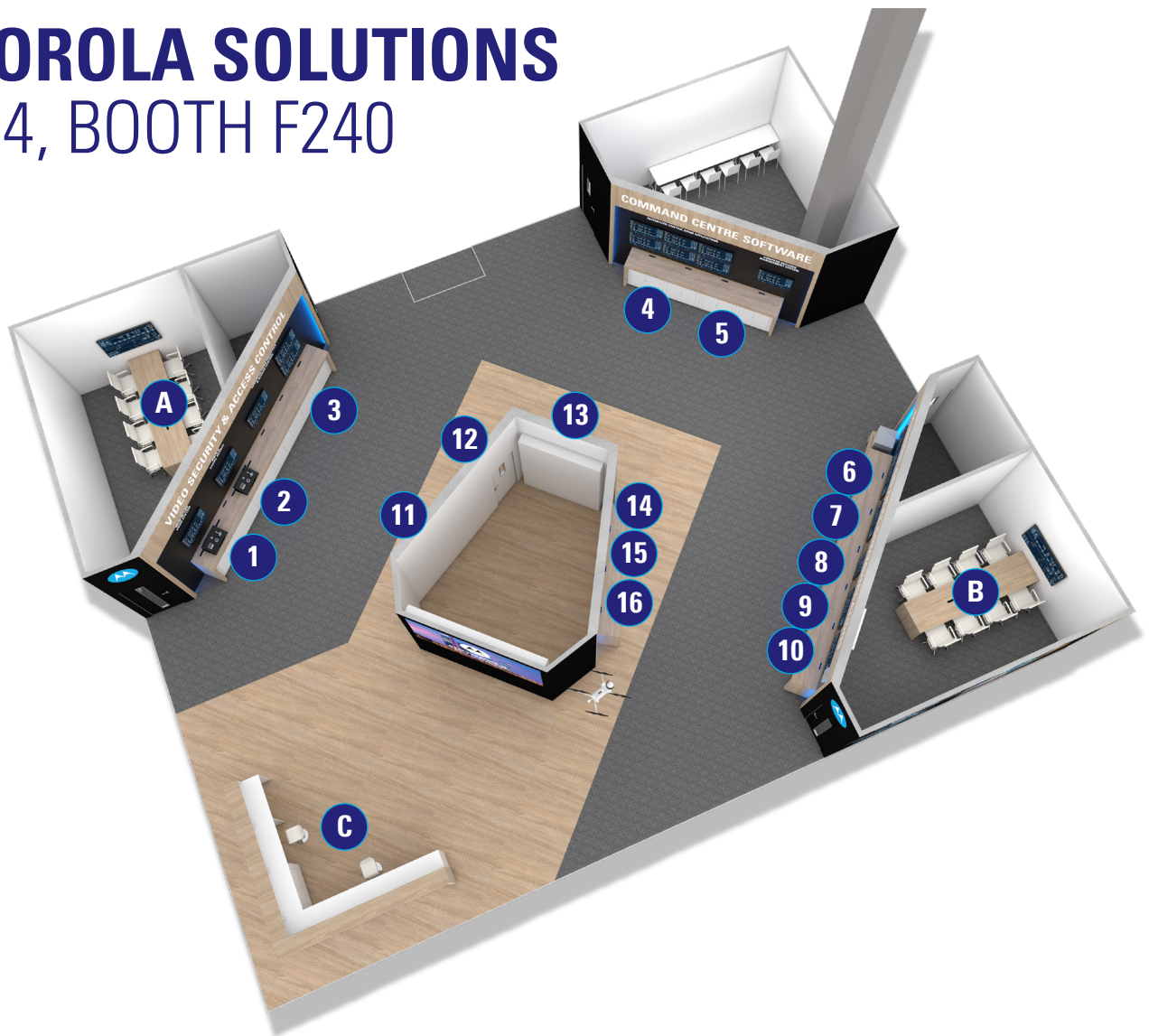
**COMMAND  
CENTRE  
SOFTWARE**

**MANAGED &  
SUPPORT SERVICES**



# MOTOROLA SOLUTIONS

## HALL 4, BOOTH F240



### DETECT & ANALYSE

#### 1 IN-CAR VIDEO SOLUTIONS\*

Motorola Solutions video camera systems and evidence management software designed specifically for in-vehicle use as one highly- integrated, synchronised system to capture the most compelling and unbiased video evidence.

#### 2 ANPR & FACIAL RECOGNITION\*

Build actionable intelligence with our facial recognition technology that utilises biometric algorithms with existing IP cameras and our ANPR end-to-end solutions that use powerful analytics via a user friendly investigative platform.

#### 3 VIDEO SECURITY & ACCESS CONTROL\*

Motorola Solutions' scalable video portfolio is designed with growth in mind and empowers security teams with high performance technology including powerful video analytics, video management software, surveillance cameras and access control solutions.

### ASSESS & MANAGE

#### 4 COMMAND CENTRE SOFTWARE

Our command centre software helps agencies work more efficiently and effectively with call handling, command and control and records and evidence management, and supports enhanced operational performance with integrated voice and video streams.

#### 5 DECISION MANAGEMENT SYSTEM

The Compass Decision Management System offers an intuitive operational interface that supports the decision making process for control room security operators. It provides organisations with a companion application that helps to improve consistency and effectiveness of response actions by presenting better insights from all their connected safety and security systems.

#### A B MEETING ROOMS

Meeting rooms must be booked in advance

#### C RECEPTION DESK

General enquiries and starting point for booth tours.

# MOTOROLA SOLUTIONS

## HALL 4, BOOTH F240

### COMMUNICATE & RESPOND

#### 6 TETRA INFRASTRUCTURE

Our TETRA solutions offer secure, reliable and efficient communications customised to meet the needs of a wide range of users. From single-site to fully scalable nationwide systems, DIMETRA TETRA systems provide tough, resilient and efficient mission-critical communications.

#### 7 M-RADIO CONTROL APP

This collaborative app on a Bluetooth paired smartphone allows control of the MXP600 TETRA subscriber whilst keeping the radio attached to the body or discreetly out of sight. It provides deeper interaction with the radio including searching for talkgroups, sending status updates or SDS messages.

#### 8 MOTOTRBO CONTROL ROOM SOLUTIONS

Integrating powerful voice and data communications with advanced fleet control and dispatch functionalities, MOTOTRBO Control Room Solutions maximise your business operational effectiveness. They allow control room personnel to organise and deliver routine tasks more efficiently, communicate better with teams in the field and make faster, sounder decisions when incidents happen.

#### 9 BROADBAND PUSH-TO-TALK

Our broadband push-to-talk solutions provide group communications that instantly connect teams across smartphones, tablets, radios and PCs. WAVE PTX can be deployed on-premises or in-the-cloud and users can even communicate between smartphones and our MOTOTRBO and TETRA radios. Our KODIAK platform can be network integrated and supports 3GPP MCPTT-compliant deployments.

#### 10 NITRO PRIVATE BROADBAND

More than ever before, data applications are empowering workers to be more connected, more effective and more efficient. Nitro is our new LTE platform that delivers lightning-fast on-site private broadband data capability through compact indoor and outdoor eNodeBs.

#### 11 CYBERSECURITY

The ActiveEye managed security platform provides continuous insights to security relevant activity with auto-notifications, a daily email summary and monthly reports, and is based on a flexible architecture to evolve with modern IT systems.

#### 12 MANAGED & SUPPORT SERVICES

As technology advances, so does the complexity of your devices and networks but supporting them doesn't have to be a burden. Motorola Solutions can manage the complexity for you with technical support, hardware repair, software and security updates, network monitoring and even full system management.

#### 13 DEVICES AND ACCESSORIES

Motorola Solutions offers a broad range of portable and mobile devices, plus the accessories, network infrastructure and software tools needed to run a critical two-way radio system. Whether your system utilises PMR446, TETRA, DMR, P25 or LTE technology, we have the solutions you need to support your operations.

#### 14 FIELD RESPONSE & REPORTING\*

Simplify and streamline disparate business processes for front line operational users with Pronto digital policing that provides an efficient, effective, mobile and interconnected solution.

#### 15 BODY-WORN CAMERAS AND EVIDENCE MANAGEMENT\*

Body-Worn Cameras are an unquestionable source of evidence and help reduce aggression and abuse towards the wearer. With audit trail features, encrypted data and tamper-proof hardware, our solution ensures the wearer is protected and accountable for their actions.

#### 16 CAPE COMMAND UAV OPERATIONS

Increase officer safety, improve response times and augment operational efficiency with the scalable and cost-effective CAPE solution that allows agencies to stream live video, capture evidence and operate drones remotely from a centralised location.

\*Photography, video capture and facial recognition will be undertaken on the Motorola Solutions stand. Entry to the stand constitutes consent to such photography, filming and/or recording for the purpose of the demonstration taking place during the trade show, waiving any right to financial compensation. See the video capture notice on the stand for more information.

# MOTOROLA SOLUTIONS HIGHLIGHTS AT CRITICAL COMMUNICATIONS WORLD 2021

## 1 M500 IN-CAR VIDEO SYSTEM



- Powerful video analytics engine that captures video evidence to keep you safer and more efficient.
- System includes front camera, cabin camera, control panel, core processor, Hi-Fi microphone.

## 2 L5M MOBILE ANPR CAMERA SYSTEM



- High-performance solution for those who want to maximise detections and accurate data collection.
- New industry-leading image sensor provides unprecedented low light performance for accurate number plate and vehicle make/model recognition.

## 3 H5A RUGGED PTZ CAMERA

- Rugged Pan-Tilt-Zoom (PTZ) camera built to last in the harshest environments.
- High-resolution imaging, 360 degree PTZ views and up to a powerful 36x zoom.



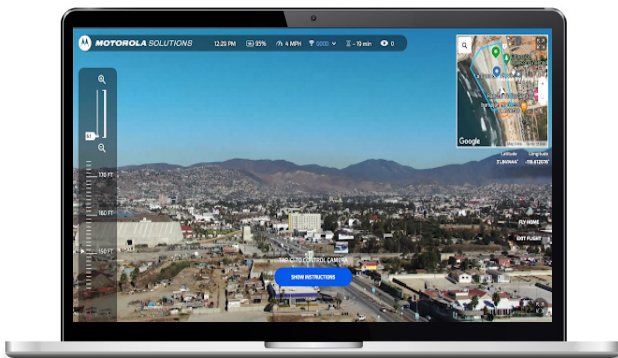
## 6 TETRA NEW FEATURES

- DIMETRA X Core Edge Resilience preserves communication between dispatchers and a local site if connection to the master site goes down.
- DIMETRA X Core Deployable provides a deployable and dynamic communications solution for military organisations from base to deployment.



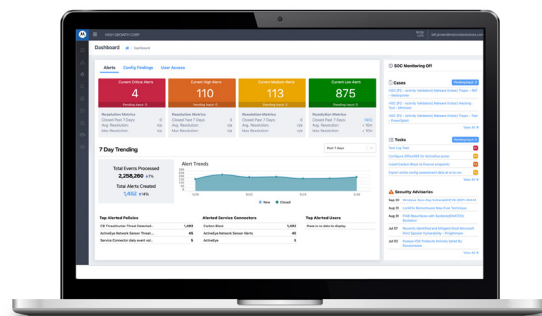
## 16 CAPE COMMAND REMOTE UAV OPERATIONS

- First-On-Scene intelligence transforms situational awareness for public safety and enables significant reduction in response times.



## 11 ACTIVEEYE MANAGED SECURITY PLATFORM

- Drive faster detection and response with better insights and ranked alerts so analysts are focused on the highest risks.
- ActiveEye optimises and scales managed detection and response capabilities across your enterprise.



# MOTOROLA SOLUTIONS HIGHLIGHTS AT CRITICAL COMMUNICATIONS WORLD 2021

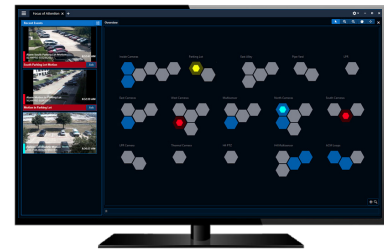
## 4 COMMAND CENTRE SOFTWARE

- CommandCentral CRS provides a cloud-based control room solution with mapping and CAD integration.
- Compas Decision Management System offers better insights with correlated incident triggers from multiple connected safety and security systems.



## 3 AVIGILON CONTROL CENTER

- Advanced video management software that utilises AI to help ensure critical events do not go unnoticed.
- Focus of Attention flags alerts including Unusual Motion or Unusual Activity Detected, Face or Number Plate Watch-List Match and No Face Mask Detection.



## 7 MXP600 TETRA PORTABLE

- Our smallest Class 3 capable TETRA radio with loud 2W audio, IP68 rating and multiple GNSS support
- Bluetooth 5 and collaboration with M-Radio Control App.
- Easy, low cost management thanks to over-the-air or over Wi-Fi updates.



## 13 MOTOTRBO ION SMART RADIO

- MOTOTRBO DMR and 3G, 4G LTE and Wi-Fi data capability in one device.
- Boost productivity with always on apps, dependability, connectivity, uptime and security.
- Android platform and full multi-media capability.



## 7 M-RADIO CONTROL APP

- Collaborative app on a Bluetooth paired smartphone allows control of MXP600 whilst keeping the radio attached to the body or discreetly out of sight.
- Provides deeper interaction with the radio: talkgroup searches, sending status updates or SDS messages.



## 9 EVOLVE LTE HANDHELD DEVICE

- A rugged LTE handheld device built for enterprise and public safety.
- Ideal companion for WAVE PTX thanks to dedicated controls (PTT, emergency button, channel rocker) and loud, clear audio.







VISIT US ON BOOTH F240 IN HALL 4 AT  
CRITICAL COMMUNICATIONS WORLD 2021  
**[www.critical-communications-world.com](http://www.critical-communications-world.com)**  
**3-5 NOVEMBER 2021 | IFEMA, MADRID, SPAIN**



**For more information, visit [motorolasolutions.com](http://motorolasolutions.com)**

Motorola Solutions Ltd. Nova South, 160 Victoria Street, London, SW1E 5LB, United Kingdom.

MOTOROLA, MOTO, MOTOROLA SOLUTIONS and the Stylized M Logo are trademarks or registered trademarks of Motorola Trademark Holdings, LLC and are used under license. All other trademarks are the property of their respective owners. ©2021 Motorola Solutions, Inc. All rights reserved. (10-21)



**MOTOROLA SOLUTIONS**